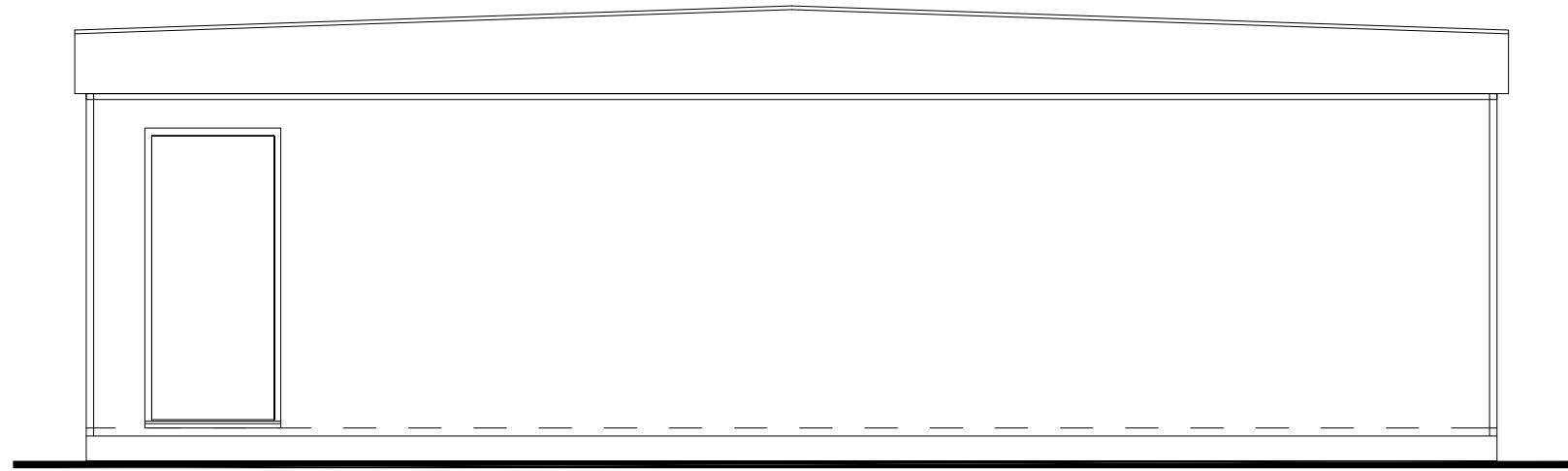
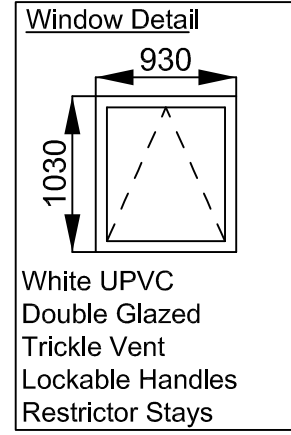


DO NOT SCALE  
IF IN DOUBT ASK

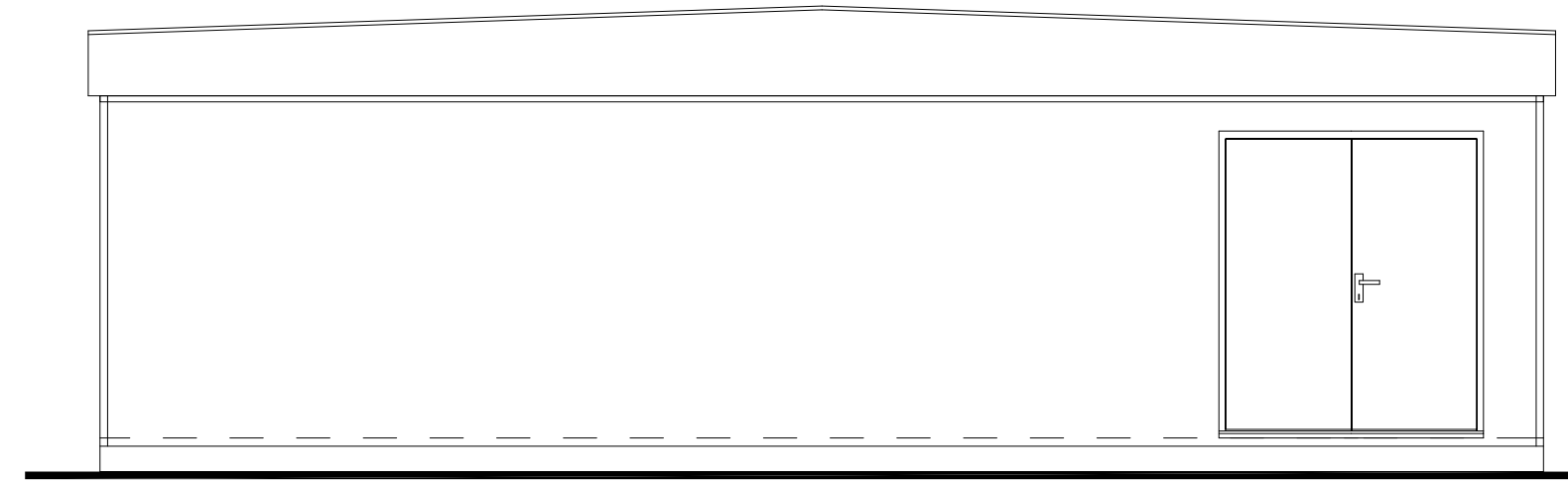
REF NO FH/712

NOTES:  
All dimensions must be checked on site and not scaled from this drawing

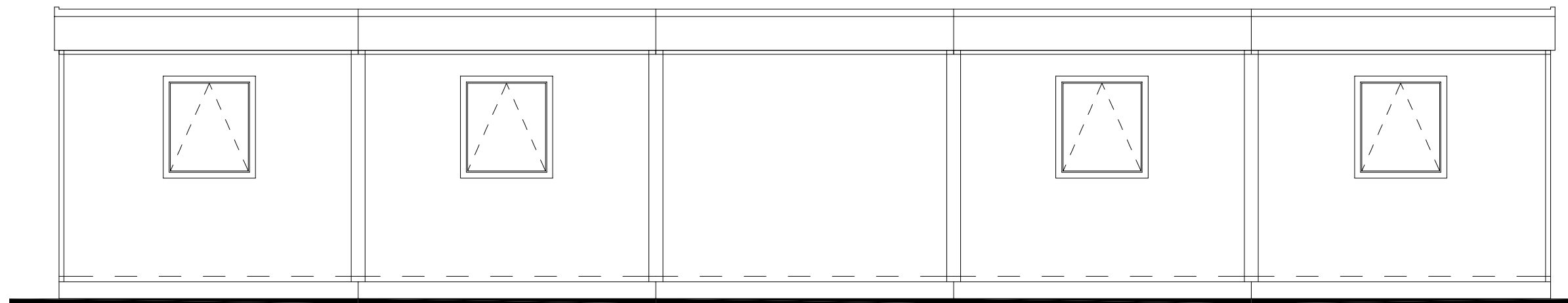
SQM AREA = 145 SQM  
SQFT AREA = 1556 SQFT



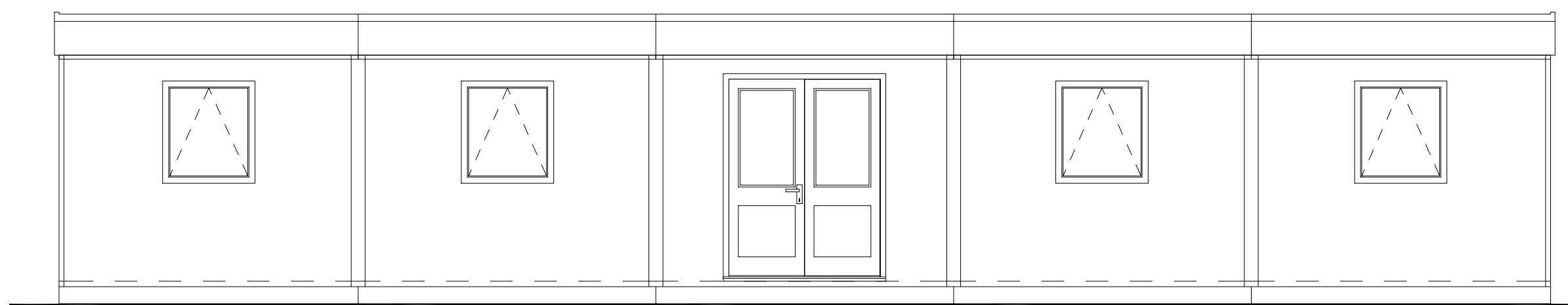
Side Elevation



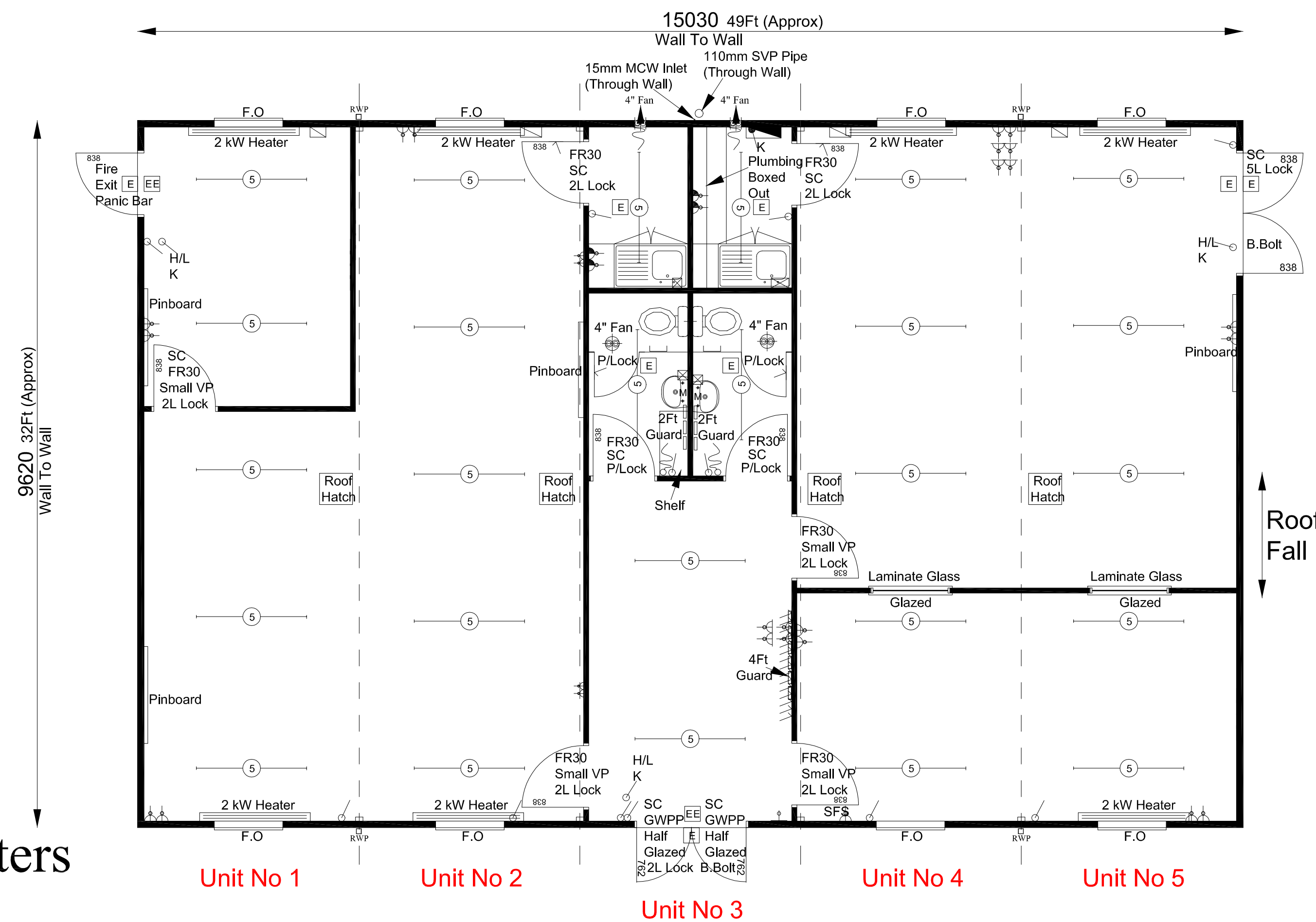
Side Elevation



Rear Elevation



Front Elevation



Low Surface Temperature Heaters  
Marley Roof  
FFL - 210mm  
Ceiling Height - 2400mm

Electrical Legend

	2' Anti Frost Tube Heater c/w Fused Spur
	4' Anti Frost Tube Heater c/w Fused Spur
	2kW Low Surface Temperature Heater
	5' Fluorescent Light
	1 Way Light Switch
	Pull Switch
	Emergency Exit Light (3 Hour, Non Maintained)
	Emergency Light (3 Hour, Non Maintained)
	Key Switch
	4' Wall Fan
	Ceiling Fan
	13 Amp Single Socket
	13 Amp Double Socket
	High Level 13 Amp Double Socket
	Mains Board
	Sub Mains Board
	Over Sink Water Heater

REV DATE REVISIONS

©copyright  
**Foremans**  
Relocatable Building Systems  
Catfoss Lane, Brandesburton,  
Driffield, East Yorkshire, YO25 8EJ  
Telephone : 01964 544344 Fax : 01964 542141  
E-mail : sales@foremansbuildings.co.uk  
Web : http://www.foremansbuildings.co.uk

CLIENT

JOB TITLE

**5 Bays Of Redhall  
Modular Building**

DRAWING TITLE

**Production Layout Plan  
And Elevation Drawing**

SCALE

**1 = 50**

DATE

**26/11/2004**

DRAWN BY

**R.COUSINS**

DRAWING NO

**FH/0125135-1**

REV